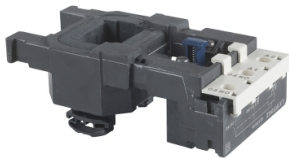


Product data sheet

Specifications



TeSys F - contactor coil - LX1FF - 1000 V AC 50 Hz

LX1FF1000

⚠ Discontinued

Main

Range	TeSys
Product Or Component Type	Contactor coil
Device Short Name	LX1FF
Range Compatibility	TeSys TeSys F LC1F contactor
Product Compatibility	LC1F115 LC1F150
Control Circuit Type	AC at 50 Hz
[Uc] Control Circuit Voltage	1000 V AC 50 Hz
Inductance Of Closed Circuit	68.5 H
Average Resistance	610 Ohm at 20 °C
Operating Time	23...35 ms closing 5...15 ms opening
Mechanical Durability	10 Mcycles
Maximum Operating Rate	2400 cyc/h 55 °C

Complementary

Coil Technology	Without built-in suppressor module
Control Circuit Voltage Limits	Drop-out: 0.35...0.55 Uc 50/60 Hz (at 55 °C) Operational: 0.85...1.1 Uc 50/60 Hz (at 55 °C)
Inrush Power In Va	550 VA 50 Hz cos phi 0.3 (at 20 °C)
Hold-In Power Consumption In Va	45 VA 50 Hz cos phi 0.3 (at 20 °C)
Heat Dissipation	12...16 W at 50 Hz

Environment

Ambient Air Temperature For Operation	-5...55 °C
Net Weight	0.43 kg

Packing Units

Unit Type Of Package 1	PCE
Number Of Units In Package 1	1

Contractual warranty

Disclaimer: This documentation is not intended as a substitute for and is not to be used for determining suitability or reliability of these products for specific user applications

Warranty

18 months