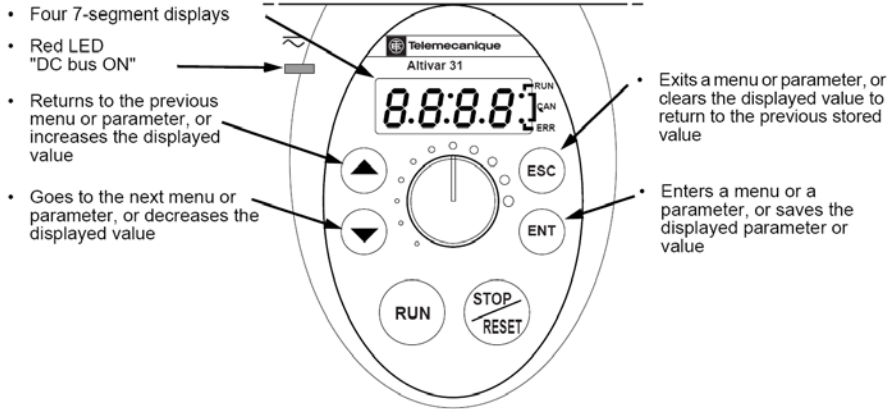


Technical Note - 04

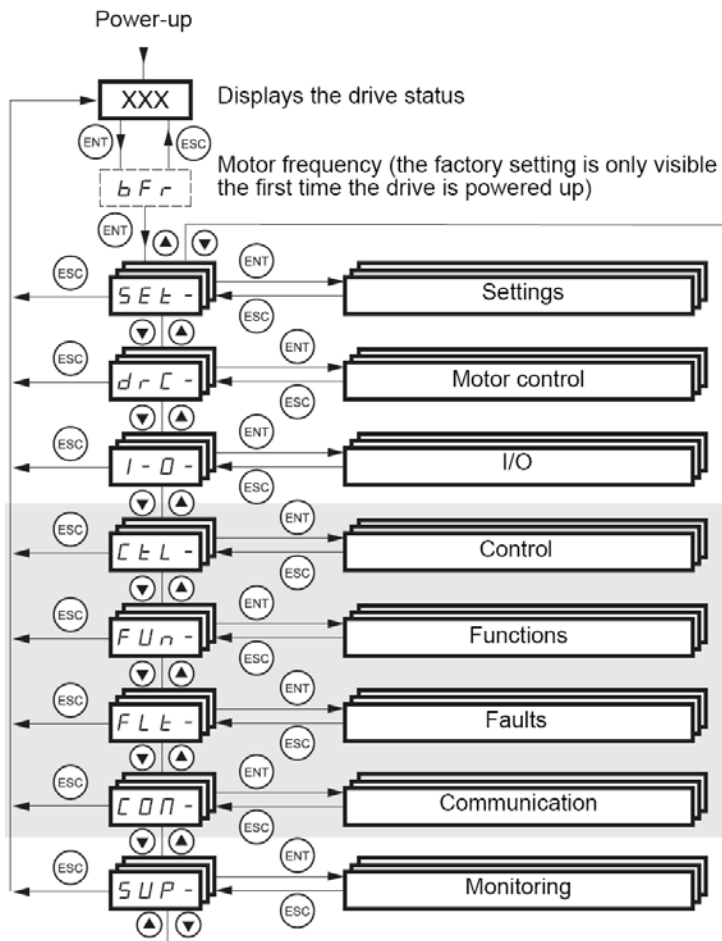
ATV31 Series

Quick Programming Guide

Functions of the display and the keys



Menu Structure



Written By :
Approved Technical:
Approved Marketing:

Pravin D'Lima
Richard Pratley
Andrew Logue

Applications Engineer
Technical Manager
Product Manager

Date:
Ref:
Version:

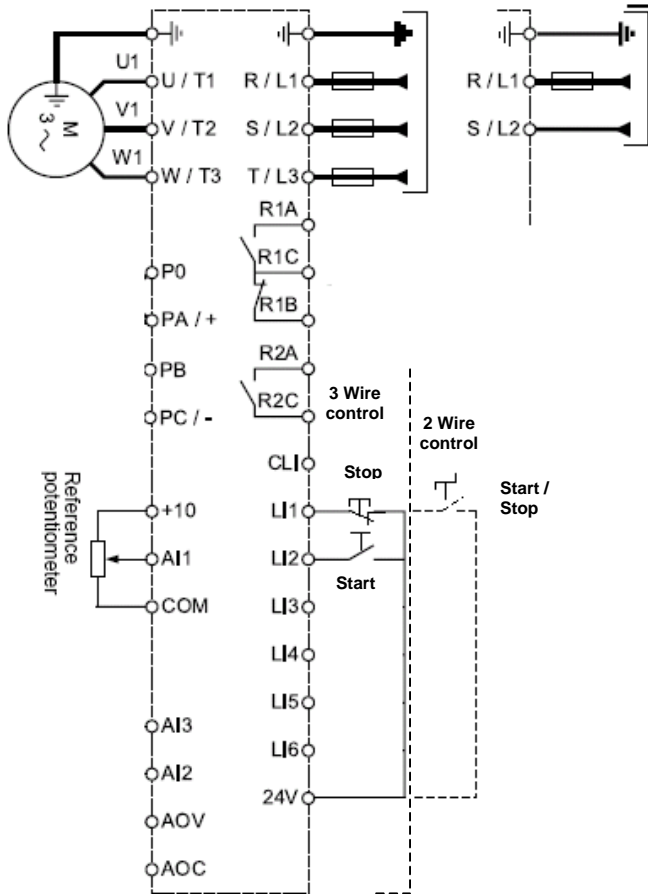
15-Dec-04
Tech Note 04
1.0

Technical Note - 04

ATV31 Series

Wiring Example

3 WIRE OR 2 WIRE CONTROL WITH POTENTIOMETER REFERENCE



Step1. Configure motor parameters in the **drC-** menu:

UnS: Motor Voltage 230V or 400V
nCr: Motor nominal current

Step2. Configure Logic Inputs in the **I-O-** menu:

For 3 wire control
tCC to 3C (3-wire control)

For 2 wire control
tCC to 2C (2-wire control)
tCt to LEL (Level triggered signal, allows drive to start when powered up)

NOTE: HOLD ENTER KEY FOR 2 SECONDS FOR CONTROL MODE CHANGE. Display flashes once to indicate acceptance of new control mode.

Step3. Configure speed reference in the **CtL-** menu:

Fr1 to AI1 (Analog input 1)

NOTE: The default speed reference is the local potentiometer.

Application Guide:

In 3- Wire control mode, Logic Input 1 (LI1) is assigned to Stop, Logic Input 2 (LI2) to Forward and Logic Input 3 (LI3) to Reverse. Run or Stop commands are pulse inputs.

In 2- Wire control mode, Logic Input 1 (LI1) is assigned to Forward and Logic Input 2 (LI2) to Reverse. Run command is a maintained input.