

# Schneider Electric Multi 9 Selection Guide

Evolution of the Multi 9 circuit breaker





## Merlin Gerin → Schneider Electric

Evolution of the Multi 9 circuit breaker



> The industry's most successful circuit breaker



- > Fully compatible with legacy systems
- > Extreme temperature tested
- > Fast-closing contacts
- > Enhanced discrimination
- > Surge arrestors to protect sensitive electronic devices



> Safety and security

You know that choosing Multi 9 has always provided unparalleled confidence.

Now that peace of mind is going to continue every time you specify Schneider Electric.

Because New Zealand's most successful circuit breaker is changing its name to the Schneider Electric circuit breaker. The innovation and quality that's made Multi 9 the electrician's first choice is still proudly available; just say Schneider Electric to get it.



### Isolators



Model	Current rating	No of poles	Reference
I	63A	1	15013
		2	15014
		3	15015
		4	15016
	100A	1	15090
		2	15091
		3	15092
		4	15093

### MCB 4.5kA



Model	Poles	Rating (A)	Reference C curve
C60a	1P	6	11354
		10	11355
		16	11356
		20	11357
		25	11339
		32	11358
		40	11359

### MCB 6.0kA



Model	Poles	Rating	Reference C curve
C60N	1P	1A	25797
		2A	25798
		4A	25800
		6A	25801
		10A	25802
		16A	25803
		20A	25804
		25A	25805
		32A	25806
		40A	25807
		50A	25808
		63A	25809
			3P
2A	25826		
4A	25828		
6A	25829		
10A	25830		
16A	25831		
20A	25832		
25A	25833		
32A	25834		
40A	25835		
50A	25836		
63A	25837		



### RCCB (residual current operated circuit breaker without overcurrent protection)



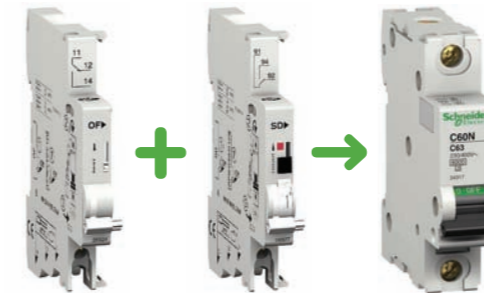
Model	Current rating	No of poles	Sensitivity	Reference
ID	40A	2	30mA	23358
	63A	2	30mA	23362
	40A	4	30mA	23382
	63A	4	30mA	23386

### RCBO (residual current operated circuit breaker with overcurrent protection)



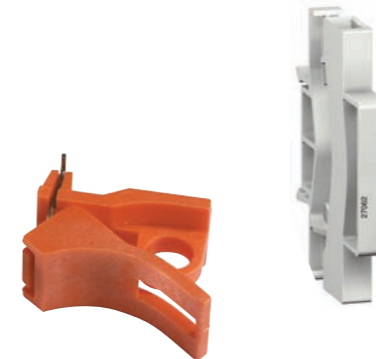
Model	Current rating	No of poles	Sensitivity	Reference
DPN Vigi	6A	1 + N	30mA	19771
	10A	1 + N	30mA	19772
	16A	1 + N	30mA	19774
	20A	1 + N	30mA	19775
	25A	1 + N	30mA	19776
	32A	1 + N	30mA	19777
	40A	1 + N	30mA	19778

### Auxiliaries



Description	Reference
OF "on/off" auxiliary (1 C/O)	26924
SD fault auxiliary (1 C/O)	26927

### Accessories



Description	Compatible with	Reference
Spacer	Multi 9	27062
Padlocking device	C60	26970

### Surge Arresters



Model	No of poles	I <sub>max</sub> kA	Reference
PRD20	1P	20	16571
	1P + N	20	16572
	3P	20	16447
	3P + N	20	16574
PRD40	1P	40	16566
	1P + N	40	16567
	3P	40	16568
	3P + N	40	16569

### Contactors



Type	Ratings	No of contacts	Coil voltage	Reference
CT	16A	1NC + 1NO	240V	15956
		2NO	240V	15957
	25A	1NO	240V	15958
		2NO	240V	15959
		2NC	240V	15960
		4NO	240V	15962
		4NC	240V	15963

### Time switches: analog



Type	Channels	Cycle	Rating	Reference
IH	1 N/O	24hr	16A	15335
	1 N/O	7 Day	16A	15331
	2 C/O	24hr	10A	15337

### Time switches: digital



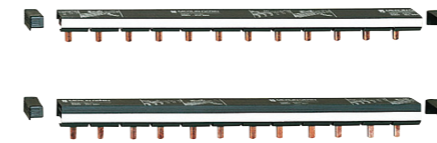
Type	Channels	Cycle	Rating	Reference
IHP + 1c 18mm	1C/O	24hr/7 day	16A	15725
IHP + 1c	1C/O	24hr/7 day	16A	CCT15721
IHP + 2c	2C/O	24hr/7 day	16A	CCT15723
Programming kit		For reference CCT15721/23 – includes software, PC connection and memory key		CCT15860

### Control transformers



Type	Description	Secondary voltage (V)	Power (VA)	Reference
TR	Bell transformer	8–12	8	15216

### Comb busbar



Description	Type	No of ways	Reference
Comb busbar 100A	1P	12	14881
		24	14891
	3P	12	14883
		24	14893

Short circuit current withstand - compatible with the breaking capacity of Schneider Electric modular circuit breakers.

### Accessories



Description	Reference
Insulated connector for 100A comb busbar 25mm <sup>2</sup> cable (Pack x4)	14885

### PDL Superboard, Flush mount



Description	Reference
10 way	DBF10
15 way	DBF15
30 way	DBF30
45 way	DBF45
60 way	DBF60
30 way, bundle pack	DBF30BP
45 way, bundle pack	DBF45BP
DBF30BP contains: 1xDBF30, 2x23358, 5x11357, 3x11355	
DBF45BP contains: 1xDBF45, 4x23358, 10x11357, 2x11355	

For more products and information

- > Refer to the Schneider Electric New Zealand Catalogue (ask for it at your local wholesaler or call Customer Care on 0800 652 999 for your copy)
- > Visit [www.schneider-electric.co.nz](http://www.schneider-electric.co.nz) (includes links to PDL and Clipsal products)

